

# LobePro Rotary Lobe Pumps

## *Better Pumps, Better Support!*

### 1. **Better R&D.**

We only make rotary lobe pumps – nothing else. Our focus is on continuously improving our pumps.

### 2. **Better Pump Selection.**

We take the time to understand your application so you get the best metals, elastomers, pump, and motor for your application. We tailor our pumps to meet your requirements.

### 3. **Better Engineering Support.**

Our applications engineers focus on delivering quality drawings and updates on time.

### 4. **Better Performance.**

USA made precision parts for just right fit and clearances resulting in low slip without excessive wear or horsepower use.

### 5. **Better Testing.**

We test every pump to ensure that it meets our published GPM and horsepower curve at duty point pressure AND our customers' requirements.

### 6. **Better Delivery.**

4-6 weeks for bareshaft pumps. 6-8 weeks for systems. Expedited service available.

### 7. **Better Customer Service.**

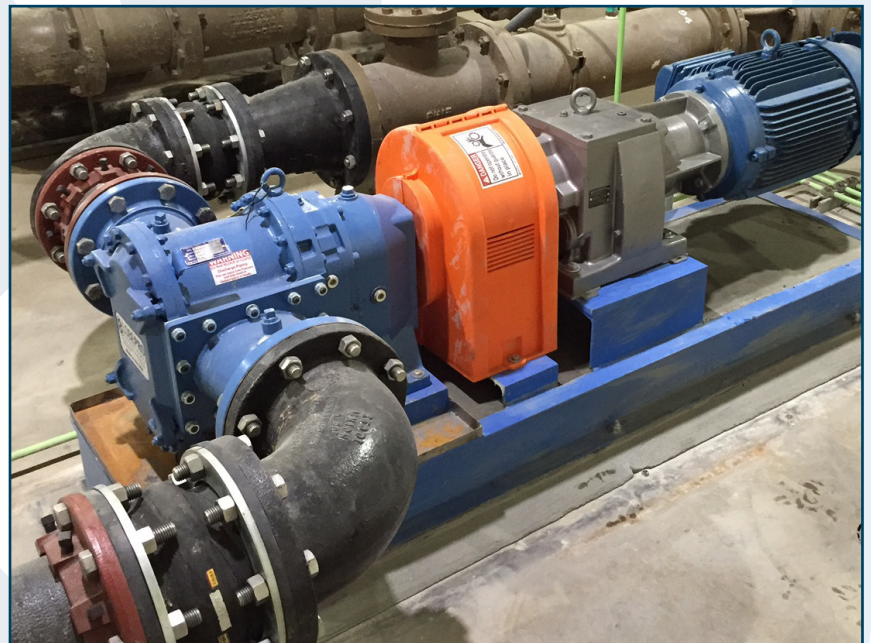
We do our best to solve ANY problem in a way that satisfies you. This includes online trouble shooting website (troubleshooting.lobepro.com), access to our engineers during the work week, and a 24-7 hotline 1-888-997-PUMP to our warranty manager.

### 8. **Better Warranty.**

2 year warranty on workmanship and materials.

### 9. **Better Wear Parts Delivery.**

Standard wear parts are shipped in 2 working days or the parts are FREE. Guarantee applies for 5 years after purchase of a LobePro pump.



**LOBEPRO**  
ROTARY PUMPS

2610 Sidney Lanier Drive  
Brunswick, Georgia 31525  
1-888-997-PUMP Toll Free  
(912) 466-0304 Telephone  
(912) 466-0086 Fax  
[www.lobepro.com](http://www.lobepro.com)